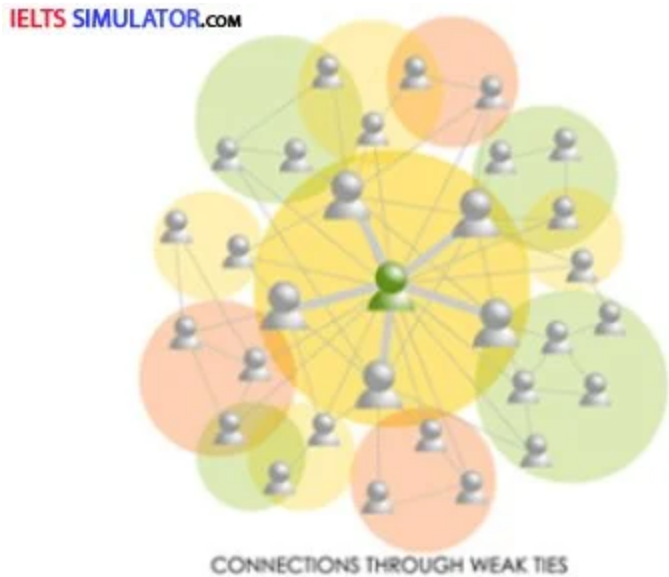


IELTS LISTENING – The ‘weak-tie’ theory: how friends-of-friends influence us S10T4



IELTS LISTENING

The ‘weak-tie’ theory: how friends-of-friends influence us

**Lecturer:** Good morning. Today we’re thinking about the way that technology is influencing our social structures and the way we interact with one another. Humans, as we know, have always lived in groups. Without this arrangement, our species would have died out long ago. But now the way we see and define our group is changing. I’d like to start by mentioning the research of American sociologist Mark Grannovetter in 1973. It was granted better, who first coined the term weak ties, which he used to refer to people’s loose acquaintances.



[Attempt full listening test...](#)

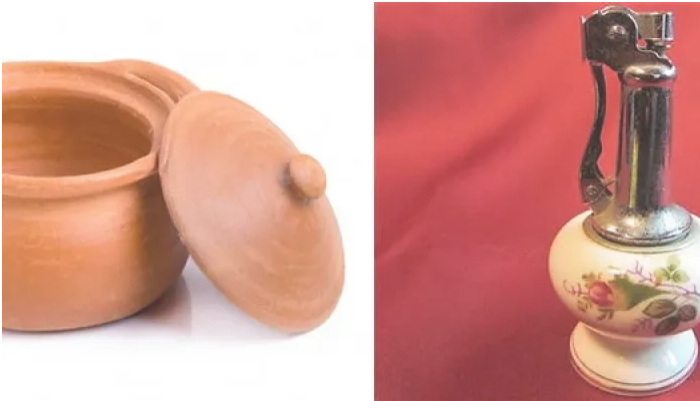
[Read more](#)



IELTS LISTENING – ‘Self-regulatory focus theory’ and leadership S18T4  
November 15, 2022  
In "IELTS Listening"



IELTS LISTENING – PRESTON PARK RUN S5T1  
June 20, 2025  
In "IELTS Listening"



IELTS LISTENING – CERAMICS S5T4  
June 20, 2025  
In "IELTS Listening"

Tagged [easy demo](#), [IELTS Listening](#)

Leave a Reply

You must be [logged in](#) to post a comment.

