

IELTS READING – LAND OF THE RISING SUN
S44AT1



IELTS Reading LAND OF THE RISING SUN reading practice test has 10 questions..

A. Japan has a significantly better record in terms of average mathematical attainment than England and Wales. Large sample international comparisons of pupils' attainments since the 1960s have established that not only did Japanese pupils at age 13 have better scores of average attainment, **q6 but there was also a larger proportion of 'low' attainers in England, where, incidentally, the variation in attainment scores was much greater.** **q7 The percentage of Gross National Product spent on education is reasonably similar in the two countries, so how is this higher and more consistent attainment in maths achieved?**

Attempt Free Reading Test..

Questions 1-5

Passage has six sections, A-F.

Choose the correct heading for sections B-F from the list of headings below.

Select the correct number, i-ix, in boxes 1-5 below.

List of Headings

i The influence of Monbusho

ii Helping less successful students

iii The success of compulsory education

iv Research findings concerning achievements in maths

v The typical format of a maths lesson

vi Comparative expenditure on maths education

vii Background to middle-years education in Japan

viii The key to Japanese successes in maths education

ix The role of homework correction

Example	Answer
Section A	iv

1 Section B

2 Section C

3 Section D

4 Section E

5 Section F

Questions 6-9

Do the following statements agree with the claims of the writer in Passage?

In boxes 6-9 below, choose

YES if the statement agrees with the claims of the writer

NO if the statement contradicts the claims of the writer

NOT GIVEN if it is impossible to say what the writer thinks about this

6 There is a wider range of achievement amongst English pupils studying maths than amongst their Japanese counterparts.

7 The percentage of Gross National Product spent on education generally reflects the level of attainment in mathematics.

8 Private schools in Japan are more modern and spacious than state-run lower secondary schools.

9 Teachers mark homework in Japanese schools.

B. **q1 Lower secondary schools in Japan cover three school years, from the seventh grade (age 13) to the ninth grade (age 15).** Virtually all pupils at this stage attend state schools: only 3 percent are in the private sector. Schools are usually modern in design, set well back from the road, and spacious inside. Classrooms are large and pupils sit at single desks in rows. Lessons last for a standardised 50 minutes and are always followed by a 10-minute break, which gives the pupils a chance to let off steam. Teachers begin with a formal address and mutual bowing, and then concentrate on whole-class teaching.

Classes are large – usually about 40 – and are unstreamed. Pupils stay in the same class for all lessons throughout the school and develop considerable class identity and loyalty. Pupils attend the school in their own neighbourhood, which in theory removes ranking by school. In practice in Tokyo, because of the relative concentration of schools, there is some competition to get into the 'better' school in a particular area.

C. Traditional ways of teaching form the basis of the lesson and the remarkably quiet classes take their own notes of the points made and the examples demonstrated. Everyone has their own copy of the textbook supplied by the central education authority, Monbusho, as part of the concept of free compulsory education up to the age of 15. **q10 These textbooks are, on the whole, small, presumably inexpensive to produce,** but well set out and logically developed. (One teacher was particularly keen to introduce colour and pictures into maths textbooks: **q10 he felt this would make them more accessible to pupils** brought up in a cartoon culture.) **q2 Besides approving textbooks, Monbusho also decides the highly centralised national curriculum and how it is to be delivered.**

D. **q3 Lessons all follow the same pattern. At the beginning, the pupils put solutions to the homework on the board, then the teachers comment, correct or elaborate as necessary.** **q9 Pupils mark their own homework:** this is an important principle in Japanese schooling as it enables pupils to see where and why they made a mistake, so that these can be avoided in future. No one minds mistakes or ignorance as long as you are prepared to learn from them.

Questions 10-13

Choose the correct letter, A, B, C or D.

Select the correct letter in boxes 10-13 below.

10 Maths textbooks in Japanese schools are

A cheap for pupils to buy.

B well organised and adapted to the needs of the pupils.

C written to be used in conjunction with TV programmes.

D not very popular with many Japanese teachers

11 When a new maths topic is introduced,

A students answer questions on the board.

B students rely entirely on the textbook.

C it is carefully and patiently explained to the students.

D it is usual for students to use extra worksheets.

12 How do schools deal with students who experience difficulties?

A They are given appropriate supplementary tuition.

B They are encouraged to copy from other pupils.

C They are forced to explain their slow progress.

D They are placed in a mixed-ability class.

13 Why do Japanese students tend to achieve relatively high rates of success in maths?

A It is a compulsory subject in Japan.

B They are used to working without help from others.

C Much effort is made and correct answers are emphasised.

D There is a strong emphasis on repetitive learning.

q11 After the homework has been discussed, the teacher explains the topic of the lesson, slowly and with a lot of repetition and elaboration. Examples are demonstrated on the board; questions from the textbook are worked through first with the class, and then the class is set questions from the textbook to do individually. Only rarely are supplementary worksheets distributed in a maths class. The impression is that the logical nature of the textbooks and their comprehensive coverage of different types of examples, combined with the relative homogeneity of the class, renders work sheets unnecessary. At this point, the teacher would circulate and make sure that all the pupils were coping well.

E. It is remarkable that large, mixed-ability classes could be kept together for maths throughout all their compulsory schooling from 6 to 15. Teachers say that they give individual help at the end of a lesson or after school, setting extra work if necessary. **q4 In observed lessons, any strugglers would be assisted by the teacher or quietly seek help from their neighbour.** Carefully fostered class identity makes pupils keen to help each other – anyway, it is in their interests since the class progresses together.

This scarcely seems adequate help to enable slow learners to keep up. However, the Japanese attitude towards education runs along the lines of 'if you work hard enough, you can do almost anything'. Parents are kept closely informed of their children's progress and will play a part in helping their children to keep up with class, **q12 sending them to 'Juku' (private evening tuition) if extra help is needed and encouraging them to work harder.** It seems to work, at least for 95 percent of the school population.

F. **q5 So what are the major contributing factors in the success of maths teaching? Clearly, attitudes are important. Education is valued greatly in Japanese culture; q13 maths is recognised as an important compulsory subject throughout schooling; and the emphasis is on hard work coupled with a focus on accuracy.**

Other relevant points relate to the supportive attitude of a class towards slower pupils, the lack of competition within a class, and the positive emphasis on learning for oneself and improving one's own standard. And the view of repetitively boring lessons and learning the facts by heart, which is sometimes quoted in relation to Japanese classes, may be unfair and unjustified. No poor maths lessons were observed. They were mainly good and one or two were inspirational.

Attempt Free Reading Test..

Learn From Experienced Teacher Best IELTS Coaching Dehradun Best IELTS in Dehradun Uttarakhand GMS Road BEST coaching in Dehradun Apply for Class Courses Today Good Results.

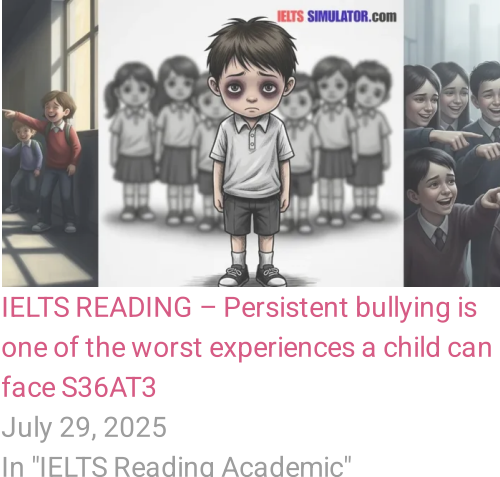
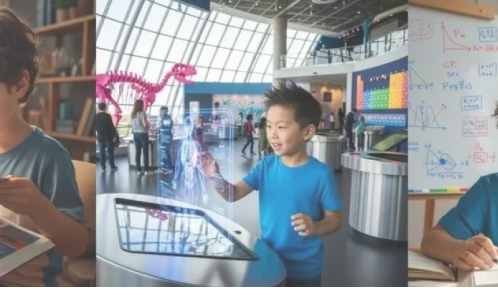


8439000086
8439000087
7055710003
7055710004

IELTS Simulation 323 GMS Road, Near Ballupur Chowk, Dehradun, India

Chat on WhatsApp

email: info at ieltsband7.com



Tagged IELTS Academic Reading, Top 10 IELTS Reading Tips to Improve Band Score Fast



