

IELTS LISTENING – Welcome to Smith House S43T2



IELTS listening Welcome to Smith House listening practice test has 10 questions belongs to the Leisure & Entertainment subject.

COLLEGE PRESIDENT

Question 11
Choose the correct letter A-D.

11 Smith House was originally built as

A a residential college.

B a family house.

C a university.

D an office block.

Questions 12-14
Complete the explanation of the room number.
Type **NO MORE THAN THREE WORDS** for each answer.

Room Number : N 2 34

(12) wing (13) personal (14)

12 Type correct answers here. wing

13 Type correct answers here.

personal **14** Type correct answers here.

Well, good morning, everyone, it's good to see you all here. Welcome to Smith House. **Q₁₁ Smith House as you may or may not know, is one of the oldest residential colleges of the university. As you can see, the building you're in now which contains this main lounge, the dining room, the recreation room, the kitchen and the offices was part of the original old house, built in the 1840s to be used by the family of George Smith.**



[Attempt Free Listening Test...](#)

That's of course how the house and college got their names. The original house was converted into, a residential college for the university in 1940 and since then has continued to be added on to and modernised.

You'll notice when you receive your room allocation in a few minutes that your room number either begins with the letter N, S, or W like this one here. The first letter refers to the three wings of the college which come away from this main building. Of course, the letters represent the three directions – in this case – **Q₁₂ north**, south and west. **Q₁₃ Each wing has two floors**, and so the next number you see is either one, or in this case two, and this indicates which floor your room is on. The number after that is your **Q₁₄ individual room number**. So it's quite simple to find any room by going to the right wing, then floor, and then room number.

Questions 15-17
Complete the sentences below.
Type **NO MORE THAN THREE WORDS** for each answer.

- Students need a front door key between **15** Type correct answers here.
- In an emergency, students should use **16** Type correct answers here.
- Fees also cover same **17** Type correct answers here. charges.

Questions 18-20
Complete the notice below.
Type **NO MORE THAN THREE WORDS** for each answer.

HOUSE RULES

- No noise after 9 pm.
- Smoking only allowed on **18** Type correct answers here.
- No changes can be made to **19** Type correct answers here.

If you have any questions, ask the **20** Type correct answers here.

You'll also notice, when you receive your orientation pack shortly, that there are two keys. One is the key to your room and only you have that key – and the other is a key to the front door which you've just come through here from the street. **Q₁₅ This door is closed and locked at 8 pm every night and opened again at 7 am.** You'll need your key if you're coming back to the college between those times. We ask all students to always enter and leave the college through the front door. You will notice at the end of each corridor that there is another door but these are **Q₁₆ fire doors** and are kept locked from the outside. They should only be opened from the inside in case of emergency.

In your fees, you've paid a laundry fee which covers the cleaning of bed linen and towels. All bed linen and towels are clearly embossed with the name Smith House so it's easily identifiable. **Q₁₇ If you want your other laundry to be done by the college this can be arranged for a small extra fee.**

There are only a few rules here at Smith House and we have these rules so that we can all live comfortably together. The most important rule is that there must be no noise after 9 pm. **Q₁₈ There is also no smoking in the rooms or anywhere inside the college but smoking is permitted on the balconies.**

All meals are served in the dining room. Meal times are listed in your orientation pack. **Q₁₉ Please read these carefully as meal times cannot be changed and if you arrive late I'm sorry to say you'll just go hungry.**

Q₂₀ If you're unsure about things, each floor has an elected 'floor senior' who is usually a student in their third or fourth year of study who's been at Smith House for a while. The floor seniors will introduce themselves later today and answer any questions you have. But for now, I'm going to hand you over to Marney who is going to give you the orientation packs and keys. Thanks, Marney.

[Attempt Free Listening Test...](#)

Best Results Easily Get Required Score IELTS Exam Dates Available, Small Batch Size with Flexible Time, Professional. Easily Get Required Score I am interested in IELTS Pass with Confidence, Dehradun Small Batch Size with Flexible Time, professional faculty.



8439000086
8439000087
7055710003
7055710004

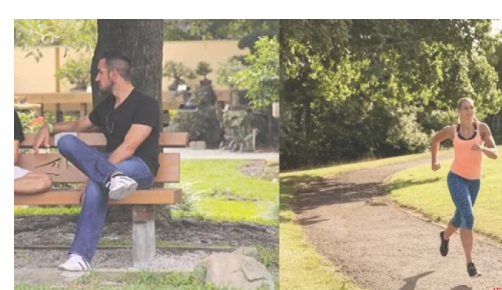
IELTS Simulation 323 GMS Road, Near Ballupur Chowk, Dehradun, India

[Chat on WhatsApp](#)

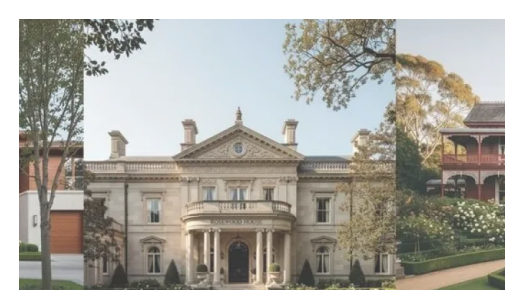
email: info at ieltsband7.com



IELTS LISTENING – Early Learning Childcare Centre Enrolment Form S18T1
July 5, 2025
In "IELTS Listening"



IELTS LISTENING – PRESTON PARK RUN S5T1
June 27, 2025
In "IELTS Listening"



IELTS LISTENING – THE HISTORY OF ROSEWOOD HOUSE S35T2
July 10, 2025
In "IELTS Listening"

Tagged [IELTS Listening](#)

Leave a Reply

You must be [logged in](#) to post a comment.



☎ 8439000087
☎ 7055710003
☎ 7055710004

▶ You Tube
📷 instagram

email: info at ieltsband7.com

