

# IELTS READING – Intelligence and Giftedness S56AT2



IELTS Reading Intelligence and Giftedness reading practice test has 10 questions belongs to Psychology and Education subject..

Attempt Free Reading Test..

## Questions 14-17

The reading Passage has seven paragraphs **A-G**. Which paragraph contains the following information? Write the correct letter **A-G** in boxes **14-17** on your answer sheet.

14. IQ is just one single factor of human characteristics.

15. Discussion of methodology behind the Professor Stern's test.

16. Inadequacy of IQ test from Binet.

17. The definition of IQ was created by a professor.

## Questions 18-21

Choose the correct letter, **A, B, C or D**. Write your answers in boxes **18-21** on your answer sheet.

18. Professor Binet devise the test to\_\_\_\_\_

- A.** ☐ find those who do not perform satisfied
- B.** ☐ choose the best one
- C.** ☐ measure the intelligence
- D.** ☐ establish the standard of intelligence

**A.** In 1904 the French minister of education, facing limited resources for schooling, sought a way to separate die unable from the merely lazy. Alfred Binet got the job of devising selection principles and his brilliant solution put a stamp on the study of intelligence and was the forerunner of intelligence tests still used today, he developed a thirty-problem test in 1905, which tapped several abilities related to intellect, such as judgment and reasoning, the test determined a given child's mental age', the test previously established a norm for children of a given physical age. (for example, five-year-olds on average get ten items correct), therefore, a child with a mental age of five should score 10, which would mean that he or she was functioning pretty much as others of that age. the child's mental age was then compared to his physical age.

19. The test is designed according to\_\_\_\_\_

- A.** ☐ math
- B.** ☐ age
- C.** ☐ reading skill
- D.** ☐ gender

20. US Army used Intelligence tests to select\_\_\_\_\_

- A.** ☐ Officers
- B.** ☐ Normal Soldiers
- C.** ☐ Examiners
- D.** ☐ Submarine drivers.

21. the purpose of the text is to\_\_\_\_\_

- A.** ☐ Give credit to the contribution of Binet in IQ test
- B.** ☐ prove someone's theory is feasible,
- C.** ☐ discuss the validity and limitation of test
- D.** ☐ outline the history of the test

**B.** A large disparity in the wrong direction (e.g., a child of nine with a mental age of four) might suggest inability rather than laziness and mean he or she was earmarked for special schooling, Binet, however, denied that the test was measuring intelligence, its purpose was simply diagnostic, for selection only. This message was however lost, and caused many problems and misunderstanding later.

**C.** Although Binet's test was popular, it was a bit inconvenient to deal with a variety of physical and mental ages. So in 1912 Wilhelm Stern suggested simplifying this by reducing die two to a single number, he divided the mental age by the physical age, and multiplied the result by 100. An average child, irrespective of age, would score 100. a number much lower than 100 would suggest the need for help, and one much higher would suggest a child well ahead of his peer.

**D.** This measurement is what is now termed the IQ (for intelligence quotient) score and it has evolved to be used to show how a person, adult or child, performed in relation to others, (the term IQ was coined by Lewis m. Terman, professor of psychology and education of Stanford university, in 1916. he had constructed an enormously influential revision of Binet's test, called the Stanford-Binet test, versions of which are still given extensively.)

**E.** The field studying intelligence and developing tests eventually coalesced into a sub-field of psychology called psychometrics (psycho for 'mind' and metrics for 'measurements'). The practical side of psychometrics (the development and use of tests) became widespread quite early, by 1917, when Einstein published his grand theory of relativity, massscale testing was already in use. Germany's unrestricted submarine warfare (which led to the sinking of the Lusitania in 1915) provoked the United States to finally enter the First World War in the same year. The military had to build up an army very quickly; it had two million inductees to sort out. Who would become officers and who enlisted men? Psychometricians developed two intelligence tests that helped sort all these people out, at least to some extent, this was the first major use of testing to decide who lived and who died, as officers were a lot safer on the battlefield, the tests themselves were given under horrendously bad conditions, and the examiners seemed to lack commonsense, a lot of recruits simply had no idea what to do and in several sessions most inductees scored zero! The examiners also came up with the quite astounding conclusion from the testing that the average American adult's intelligence was equal to that of a thirteen-year-old!

## Questions 22-26

Do the following statements agree with the information given in **Reading Passage 2**? In boxes **22-26** on your answer sheet, write

**TRUE** if the statement is true

**FALSE** if the statement is false

**NOT GIVEN** if the information is not given in the passage

22. Part the intension in designing the test by professor Binet has been misunderstood.

23. Age as a factor is completely overbooked in the simplified tests by Wilhelm Stern

24. Einstein was a counter-example of IQ test conclusion.

25. IQ test may probably bad to racial discrimination as a negative effect.

26. The author regards measuring intelligent test as a goal hardly meaningful.

**F.** Intelligence testing enforced political and social prejudice, their results were used to argue that Jews ought to be kept out of the united states because they were so intelligently inferior that they would pollute the racial mix; and blacks ought not to be allowed to breed at all. And so abuse and test bias controversies continued to plaque psychometrics.

**G.** Measurement is fundamental to science and technology, science often advances in leaps and bounds when measurement devices improve, psychometrics has long tried to develop ways to gauge psychological qualities such as intelligence and more specific abilities, anxiety, extroversion, emotional stability, compatibility, with marriage partner, and so on. Their scores are often given enormous weight, a single IQ measurement can take on a life of its own if teachers and parents see it as definitive, it became a major issue in the 70s, when court cases were launched to stop anyone from making important decisions based on IQ test scores, the main criticism was and still is that current tests don't really measure intelligence, whether intelligence can be measured at all is still controversial, some say it cannot others say that IQ tests are psychology's greatest accomplishments.

Attempt Free Reading Test..

Learn From Experienced Teacher Best IELTS Coaching Dehradun Best IELTS in Dehradun Uttarakhand GMS Road BEST coaching in Dehradun Apply for Class Courses Today Good Results.



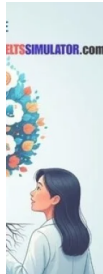
8439000086  
8439000087  
7055710003  
7055710004

IELTS Simulation 323 GMS Road, Near Ballupur Chowk, Dehradun, India

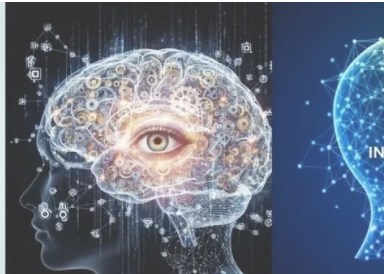


Chat on WhatsApp

email: info at ieltsband7.com



IELTS READING – The concept of intelligence S20AT1  
July 23, 2025  
In "IELTS Reading Academic"



IELTS READING – Ant Intelligence S39AT1  
July 30, 2025  
In "IELTS Reading Academic"



IELTS Reading-The Return of Artificial Intelligence S31AT3  
July 28, 2025  
In "IELTS Reading Academic"

Tagged [IELTS Academic Reading](#), [Top 10 IELTS Reading Tips to Improve Band Score Fast](#)

IELTS SIMULATOR

IELTS SIMULATOR 323 GMS Road, Near Ballupur Chowk, Dehradun, India.

8439000086  
8439000087  
7055710003  
7055710004

You Tube  
instagram

email: info at ieltsband7.com





